

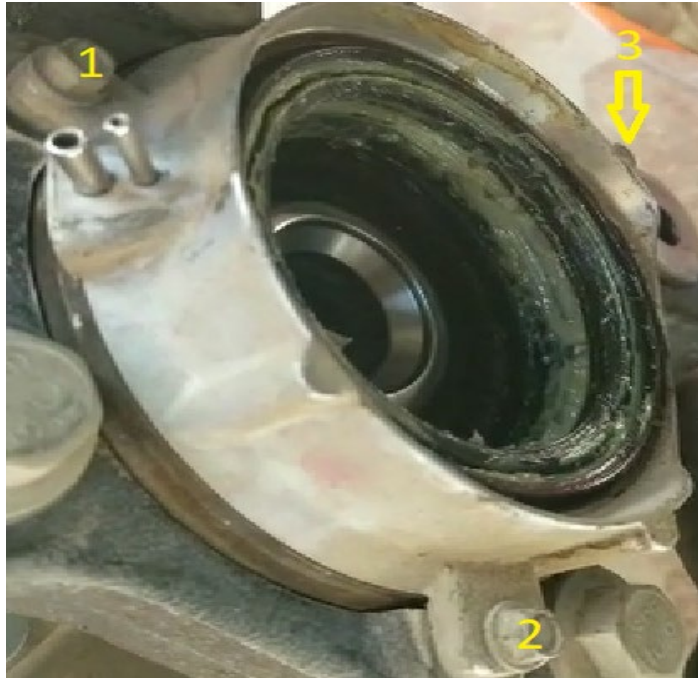


FORD IWE ELIMINATOR INSTALLATION INSTRUCTIONS

1. Following the manufacturer's recommended removal procedures, remove the following parts to allow for installation of the IWE eliminators: front brake calipers by their mounting brackets, brake rotor, brake backing plate, outer tie rod from the knuckle, ABS sensor, axle nut, upper ball joint from the knuckle. Removing these parts will partially separate the axle from the IWE. Keep all the hardware that come off of these components as they will need to be used for assembly.
2. Remove the axle from the IWE.

NOTE: *Removing the axle from the vehicle is not needed. Only remove the axle from the knuckle.*

3. Remove the vacuum lines that attach to the IWE.
4. Remove the three (3) bolts that retain the IWE to the knuckle.



5. Once all the IWE components are removed, install the IWE eliminator onto the CV axle splines first. After the IWE eliminator is installed onto the CV axle splines, carefully put the CV joint back into the wheel bearing, taking extra care to align the hub splines with the IWE eliminator and CV axle splines. A good way to keep everything is aligned is to start the axle nut onto the axle. Rotate the unit bearing by hand, if all the splines are aligned properly, the CV axle will turn smooth and quiet with the unit bearing.
6. Once it is confirmed that all splines are aligned and operating properly, install all of the parts that were removed to allow the IWE eliminators to be installed. Make sure to follow all of the appropriate procedures and torque specifications set forth by the manufacturer while reinstalling these components.

For installation videos, or other technical articles regarding this product please visit: www.rcvperformance.com/tech-info